

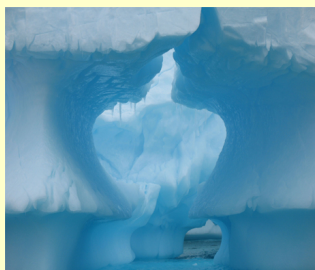
February 2011

This month we have information on some great upcoming events here at OPUS, at the Campbell Foundation and with the Institute for Cultural Change, come participate!

There is also an interesting and very current dialogue with James Hillman circulating in the mainstream digital community...scroll down for the link. Enjoy!

Safron Rossi, Ph.D.
Director

Antartica: Inner Journeys in the Outer World



Join us next Thursday for a discussion and premiere viewing of "Antarctica: Inner Journeys in the Outer World" by Robert Romanyshyn, Ph.D. Following Dr. Romanyshyn's Master Class at Pacifica we are screening his film in its entirety.

He writes, "The DVD 'Antarctica: Inner Journeys in the Outer World' is a documentary of a trip I took with my wife to that region of the world in November 2009. That trip, which began more than thirty years ago with a dream, has changed my life. The 86 images set to music and accompanied by a voice over set a tone of reverie that invites one into a landscape of beauty that awakens the ancient bonds between us and the living soul of the world."

Table of Contents

[The Ancestors Speak: JCF Mythological RoundTable® Group](#)
[Antartica: Inner Journeys in the Outer World](#)
[James Hillman in the Huffington Post](#)
[JCF Mythological ToolBox Playshop](#)
[These Women!](#)

Quick Links

[Make a Donation](#)
[Our Website](#)
[Our Blog](#)
[Email Us](#)

The Ancestors Speak: Quote from the Archive

"What myth does for you is to point beyond the phenomenal field towards the transcendent. A mythic figure is like a compass with one leg in the field of time and the other in the eternal. The image of a god may look like a human or animal form, but its reference is transcendent of that."

Joseph Campbell Pathways to Bliss

Thursday, February 17th 6:30-8:30 pm
Suggested Donation \$10
OPUS at Pacifica Graduate Institute - 801 Ladera Lane, Santa
Barbara
For tickets visit www.opusarchives.org or call us at 805.969.5750
Please RSVP to ensure a seat

James Hillman in the Huffington Post

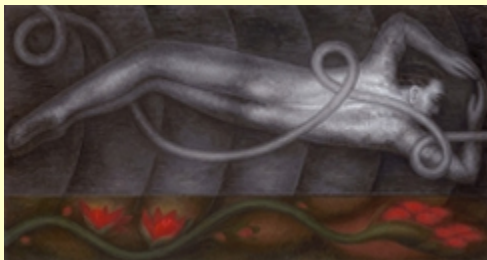
In an interview titled "**Jungian Analyst Explains the Psychology of Political Polarization**", with Pythia Peay, Hillman discusses the minds polarizing movement, the either/or set up that leads to ideological thinking and Hillman says "But this isn't how the world really is. For example, most people think that the opposite of white is black. But there are shades of black — from blackberries, to black coal or blackbirds — that have nothing to do with white. The point is to learn how to evaluate each issue on its own merits without having to bring up the opposition's point of view." To read the first part of the interview follow this link [here](#).

Joseph Campbell Foundation Mythological ToolBox™ Playshop

March 27 - April 1 at the Esalen Institute in Big Sur, CA
JCF continues Joseph Campbell's exploration into the myths that shape our lives. This year the focus will be on discovering and transforming the myths that influence how we play the game of life. If a "butterfly metamorphosis" is appealing, you are invited to join this springtime ritual of rebirth.

JCF's **Mythological Toolbox™ Playshop** is an annual event held at the Esalen Institute in Big Sur, California - an unbroken tradition begun by Joseph Campbell. Space remains, so come experience **Unexpected Obstacles & Opportunities: A Mythological Toolbox (18th ed., revised)**.

These Women!



June 24-26 in Santa
Barbara, CA

OPUS is thrilled to
co-sponsor this summer
weekend conference with
the Institute of Cultural
Change (ICC).

JCF Mythological RoundTable® Group

Join Safron's monthly
discussion group on Joseph
Campbell and his work on myth.

Thursday, March 10th 2011
The Mythic Dimension,
chapter "The Mystery
Number of the Goddess" part
1

OPUS on the Ladera campus of
Pacifica Graduate Institute
801 Ladera Lane
6:30-8:30PM

For more information or
questions, visit [OPUS](#) or
contact us at
info@opusarchives.org or
805-969-5750.


This event is free and open to
the public

These Women! An extraordinary weekend of dialogue, exploration, and dynamic conversation with the seminal voices whose life work shaped and expanded the evolution of Depth, Archetypal, and Jungian psychology: Pat Berry, Lyn Cowan, Christine Downing, Nor Hall, Ginette Paris, Hendrika de Vries, Mary Watkins, and Marion Woodman.

Call for Presentations Opportunity

There is a call for presentations with a deadline submission of March 30th. If you would like to submit a proposal or get more information on the conference please visit the ICC [here](#).



Click here to
Donate now! 

Please visit our website at www.opusarchives.org.
Click [here](#) to find out more about our volunteer opportunities.

OPUS Archives and Research Center
801 Ladera Lane | Santa Barbara, CA 93108 | (805) 969-5750
©2011 OPUS Archives and Research Center. All Rights Reserved