

April 2011

Dear Friend,

## Stories from the Guggenbühl-Craig Reception

On Friday, March 18<sup>th</sup> OPUS and Pacifica celebrated the arrival of the Guggenbühl-Craig collection to the archives. The intimate gathering was addressed by OPUS Board President Stephen Kenneally and long time student of Guggenbühl-Craig's, Joe McNair. Stephen Kenneally also shared a few words by Marvin Spiegelman on his behalf and read a piece that James Hillman sent in for the occasion. We recorded all of this for you to enjoy, simply click [here](#) to listen.

## OPUS Event - Research Tutorials in Depth Psychology with Dr. Erika Rogers

Twenty-first century depth psychology research encompasses many methodologies, techniques, and moves. While current practice encourages a mix and match *bricolage* approach to collecting and analyzing data, the possible choices are overwhelming.

How can you become familiar enough to make informed and enriched choices for research projects in a timely manner? How do you take theory and put it into practice in the field? Are there any tools to help streamline the process? How can you address and incorporate ethics requirements?

OPUS Archives is pleased to present a series of hands-on tutorials that will help you answer those questions. Each two-hour tutorial will focus on one or two specific methods for collecting and analyzing

### Table of Contents

[The Ancestors Speak: JCF Mythological RoundTable @ Group](#)  
[OPUS Event - Research Tutorials in Depth Psychology](#)  
[New Mythos Grant - The Feminine Divine: She Who Dances Us...](#)

### Quick Links

[Make a Donation](#)  
[Our Website](#)  
[Our Blog](#)  
[Email Us](#)

### The Ancestors Speak: Quote from the Archive

"It seems appropriate to view all of these Goddess images as aspects of the one Great Goddess with her core functions—life-giving, death-wielding, regeneration and renewal. The obvious analogy would be to Nature itself . . . one recognizes the fundamental and underlying unity of Nature. The Goddess is immanent rather than transcendent and therefore physically manifest."

**Marija Gimbutas**

*The Language of the Goddess*, p. 316

first-hand data, and will include demonstrations, examples, and learn-by-doing exercises. Click [here](#) for more information about the tutorials.

### Tutorial I - "Overview of Depth Psychology Research and Intro to Rich Pictures"

Sunday, April 24th, 3-5pm

Montecito Public Library  
1469 East Valley Road, Santa Barbara, CA

Cost – \$10

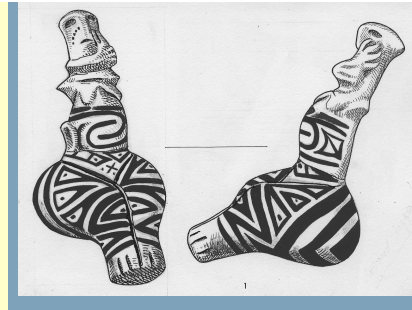
Space is limited – Register at [rsvp@opusarchives.org](mailto:rsvp@opusarchives.org) or call 805-969-5750

### New Mythos Grant - The Feminine Divine: She Who Dances Us into Being

By Jeanne M. Schul, PhD

Dr. Schul opened her research report with a question – “Why would anyone do scholarly research on the Great Goddess—spending countless hours pouring over glass slides with a magnifying glass, reading hand typed lecture transcripts, and watching old video footage—only to present her findings through modern contemporary dance? Could it be that there is a connection between the ancient goddess cultures and the human moving body of today’s dancer?”

Dr. Schul danced the connection between the ancient goddess cultures and the moving body into being. Click [here](#) to see images of the piece she wrote and had performed at Berry College. To read the full report on her artistic process and choreography click [here](#).



### JCF Mythological RoundTable® Group

Join Safron's monthly discussion group on Joseph Campbell and his work on myth.

Thursday, April 14<sup>th</sup> 2011


Topic: *Marija Gimbutas' work on the Goddess and how it influenced Campbell's.*

OPUS on the Ladera campus of Pacifica Graduate Institute  
801 Ladera Lane  
6:30-8:30PM

For more information or questions, visit [OPUS](#).

This event is free and open to the public



Click here to Donate now! 

Please visit our website at [www.opusarchives.org](http://www.opusarchives.org).  
Click [here](#) to find out more about our volunteer opportunities.

OPUS Archives and Research Center  
801 Ladera Lane | Santa Barbara, CA 93108 | (805) 969-5750  
©2011 OPUS Archives and Research Center. All Rights Reserved

